



# **LOYOLA KNOWLEDGE RESOURCE CENTRE**

## **(LIBRARY)**

### **CURRENT CONTENTS SERVICE**

**FEBRUARY 2023**

**VOLUME: 12 ISSUE:2**

***DR.SUNILKUMAR.P (CHIEF LIBRARIAN)***

***Mr.GEORGE MATHEW (Asst.LIBRARIAN)***

***Mr.PRASANTH.M.S (Asst.LIBRARIAN)***

**ASWATHY.T.R**

**ABHIJITH KRISHNAN.A.M**

**RESEENA BEEVI.S**

**LOYOLA COLLEGE OF SOCIAL SCIENCES**

**Sreekariyam,Trivandrum**

**KERALA-695017**



## Down To Earth

Founded in 1992 to arm you with knowledge critical to shaping a better world

**FOUNDER EDITOR** Anil Agarwal

**EDITOR** Sunita Narain

**MANAGING EDITOR** Richard Mahapatra

**CHIEF COPY EDITOR** Snigdha Das

**ASSOCIATE EDITORS** Aditya Misra, Rajit Sengupta

**MULTIMEDIA EDITOR** Amab Pratik Dutt

**CREATIVE DIRECTOR** Arit Bajaj

**SUPPLEMENT EDITOR** Souparna Banerjee

**CHIEF CARTOONIST** Sanit Gupta

**REPORTING TEAM** Shagun Akshat Sangamla

Pulaha Roy, Tarun Deol, Shuchita Jha,

Rohini Krishnamurthy Zumbish,

Seema Prasad, Himanshu N

**SUB EDITOR** Dakshini Patil

**WEB EDITORS** Rajat Ghai, Preetha Banerjee,

Nandita Banerji, Anya Rahini

**DESIGN TEAM** Chaitanya Chandan (Art Editor),

Ritika Bohra, Tarun Sehgal (Senior Designers),

Yogendra Anand (Illustrator), Shri Krishan

**PHOTO EDITOR** Vikas Choudhary

**PHOTO LIBRARY** Anil Kumar

**PRODUCTION** Rakesh Shrivastava, Gundhar Das

**TECH SUPPORT** Rajendra Rawat, Jaidev Sharma

**MULTIMEDIA** Joel Michael, Ashwarya Iyer,

Sunny Gautam, Midhun Vijayan

**INFORMATION AND RESEARCH SUPPORT**

Kiran Pandey, Susan Chacko, Madhumita Paul,

Shreeja Nair, Lalit Maurya, Dayanidhi Mishra

**CONSULTING EDITORS** Anumita Roychowdhury,

Vibha Varshney

**Vol 31, No 18; Total No of Pages: 60**

Editorial, subscriptions and advertisements

Society for Environmental Communications,

41, Tughlakabad Institutional Area, New Delhi 110 062,

Phone: 91-11-40616000, 29955124

29956110, 29956394, 29956399 | Fax: 91-11-29955879

Email: editor@downtoearth.org.in

© 2023 Society for Environmental Communications.

All rights reserved throughout the world. Reproduction

in any manner is prohibited. Printed and published by

Richard Mahapatra on behalf of Society for Environmental

Communications. Printed at International Print-o-Pac

Limited, B-204, 205, Okhla Industrial Area, Phase I, New

Delhi-110020, India, and published at

41, Tughlakabad Institutional Area, New Delhi 110 062.

To subscribe, sms 'die Subscribe' to 56070

or visit [www.downtoearth.org.in/subscribe](http://www.downtoearth.org.in/subscribe)

**FOR ADVERTISEMENTS** Jyoti Ghosh

[jghosh@cseindia.org](mailto:jghosh@cseindia.org)

**FOR SUBSCRIPTIONS**

[K.C.R.Raja.rajaj@cseindia.org](mailto:K.C.R.Raja.rajaj@cseindia.org)



◀ Cover design: Ajit Bajaj

Down To Earth does not endorse the content of advertisements printed in the magazine. All disputes are subject to the exclusive jurisdiction of competent courts and forums in Delhi/New Delhi only.

# Contents

## HIMALAYA SPECIAL

### 06 Joshimath at risk

Excessive construction in a fragile terrain may have led to rapid subsidence in the Himalayan town

### 16 Clear connection

Data shows disasters on the rise in the Himalayan region in recent decades

### 20 Reckless planning

Rapid and unplanned urbanisation has made the ecologically sensitive mountain states more vulnerable

### 30 Desire for hydropower

Massive hydroelectric projects planned in seismically active areas of mountainous regions

### 38 Compound effect

A warming Himalayas and ecological degradation due to human actions make a deadly mix

### 48 Matter of survival

Sustainable strategies to ensure development of mountain states

## EXPERT OPINION

Madhav Gadgil • C P Rajendran • Manoj Kumar and Raj Kiran Dhiman  
• Anil Joshi • Himanshu Kulkarni • Indra D Bhatt • P D Rai



# 30 years Down To Earth

Founded in 1992 to arm you with knowledge critical to shaping a better world

**FOUNDER EDITOR** Anil Agarwal

**EDITOR** Sunita Narain

**MANAGING EDITOR** Richang Mahapatra

**CHIEF COPY EDITOR** Smigdhra Das

**ASSOCIATE EDITORS** Aditya Misra, Rajit Sengupta

**MULTIMEDIA EDITOR** Arnab Pratim Dutta

**CREATIVE DIRECTOR** Ajit Bajaj

**SUPPLEMENT EDITOR** Souparno Banerjee

**CHIEF CARTOONIST** Sonit Gupta

**REPORTING TEAM** Shagun, Akshil Sangomla

Pulaha Roy, Taran Deol, Shuchita Jha,

Rohini Krishnamurthy, Zumbish

Seema Prasad, Himanshu N

**SUB EDITOR** Dakshini Palicha

**WEB EDITORS** Rajat Gha, Preettha Banerjee,

Nandita Banerji, Anya Rohini

**DESIGN TEAM** Chaitanya Chandon (Art Editor),

Rhika Bohra, Tarun Sehgal (Senior Designers),

Yogendra Anand (Illustrator), Shri Krishan

**PHOTO EDITOR** Vikas Choudhary

**PHOTO LIBRARY** Anil Kumar

**PRODUCTION** Rakesh Shrivastava, Gundhar Das

**TECH SUPPORT** Rajendra Rawat, Jaidev Sharma

**MULTIMEDIA** Joel Michael, Aishwarya Iyer,

Sunny Goulam, Midhun Vijayan

**INFORMATION AND RESEARCH SUPPORT**

Kiran Pandey, Susan Chacko, Madhumita Paul,

Sheeja Nair, Lalit Maurya, Dayanidhi Mishra

**CONSULTING EDITORS** Anumita Roychowdhury,

Vibha Varshney

Vol 31, No 19, Total No of Pages: 60

Editorial, subscriptions and advertisements:

Society for Environmental Communications,

41, Tughlakabad Institutional Area, New Delhi 110 062.

Phone: 91-11-40616000, 29955124,

29956110, 29956394, 29956399 | Fax: 91-11-29955879

Email: editor@downtoearth.org.in

© 2023 Society for Environmental Communications. All rights reserved throughout the world. Reproduction in any manner is prohibited. Printed and published by Richang Mahapatra on behalf of Society for Environmental Communications. Printed at International Print-a-Pac Limited, B-204, 205, Okhla Industrial Area, Phase I, New Delhi-110020, India, and published at 41, Tughlakabad Institutional Area, New Delhi 110 062.

To subscribe, sms 'dte Subscribe' to 56070

or visit [www.downtoearth.org.in/subscribe](http://www.downtoearth.org.in/subscribe)

**FOR ADVERTISEMENTS** Jyoti Ghosh

[jghosh@cseindia.org](mailto:jghosh@cseindia.org)

**FOR SUBSCRIPTIONS**

K C R Raja, [rajak@cseindia.org](mailto:rajak@cseindia.org)



◀ Cover design: Ajit Bajaj Cover illustration: Yogendra Anand

Down To Earth does not endorse the content of advertisements printed in the magazine. All disputes are subject to the exclusive jurisdiction of competent courts and forums in Delhi/New Delhi only.

COVER STORY

## 26

Race to decarbonise industries sees the US and EU shed their long-standing zeal for free trade and introduce protectionist policies at the cost of developing countries

### 14 Digest

Why the earthquake in Türkiye and Syria was so deadly

### 16 Union Budget

With allocation cuts in subsidies, rural India has little to cheer for

### 20 Jharkhand drought

The state ill-prepared despite undertaking ample water works

### 24 New energy source

Finland develops a battery using sand from construction sites

### 37 Bid for bio-CNG

All that oils production of this clean fuel in the country

### 41 Invasive species

Planned seaweed park in Tamil Nadu poses threat to coral

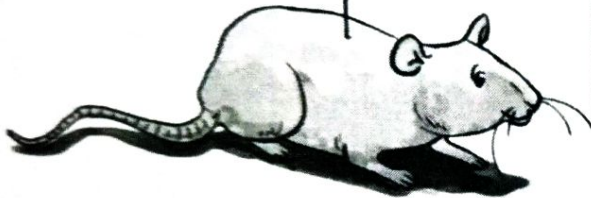




# Contents

54

Prospective  
DNA vaccine for  
dengue shows  
encouraging  
results on mice



Reduce the  
uneven load of  
tourism to protect  
the fragile  
Himalayan region

50



56

Experience of  
ecologists who  
collaborate with  
communities to  
conserve species



46 **Patently Absurd**  
Silencing scientists on critical  
matters is against public interest

58 **Civil Lines**  
Home food production systems  
at risk due to weather events



FEBRUARY 4, 2023 | VOL. LVIII NO. 5

**Suffrage in Shackles**

- 10 After 72 years of adopting universal adult franchise in its Constitution, India has remained unperturbed to the cause of voting rights of prisoners.  
— Anwesha Panigrahi, Akankhya Panigrahi

**Covid Nationalism and Its Discontents**

- 14 This article examines China's response to the spread of COVID-19, the framing of this response through nationalist narratives, and the eventual chaotic pivot from zero-Covid policy. — Tansen Sen

**SDG India Index: A Critical Assessment**

- 20 The Sustainable Development Goal India Index released by NITI Aayog continues to attract public attention. This article highlights a few methodological problems in the SDG India index. — Md Zakaria Siddiqui, Mohd Feroze Khan

**SDGs and Small Tea Growers of Assam**

- 24 Tea, the most popular beverage in the world, is also an important industry for the rural economy and acts as one of the contributors to the internationally agreed-upon Sustainable Development Goals. — Apurba Saha, Edlina Kerketta

**Natural Rubber Sector in India**

- 28 The changes experienced by natural rubber sector in India during the globalisation period and its consequent challenges are examined in this article. — A Sajitha

**Contrasted Agrarian Change in Punjab**

- 41 The scarcity of lucrative non-farm jobs and the stagnant or declining agricultural incomes for rural households in Punjab, especially for the Jat Sikhs, are causing distress. By selecting two villages of different types from Ludhiana and Jalandhar districts, this paper presents how the different conditions inherent to the villages led to sharply contrasted agrarian changes. — Koichi Fujita, Akihiko Ohno & Kamal Vatta

**New Labour Codes and Women Workers**

- 52 The union government has enacted four new codes amalgamating existing 29 labour legislations, and presently is in the process of finalising the rules. This paper examines the probable impact of such changes on women workers, in the context of the declining female labour force participation rate in the last few decades. Labour laws need to be reframed in such a manner that they contain measures that facilitate greater female participation in the labour market. — Kingshuk Sarkar, Ellina Samantroy

**How Smart Are Indian Smart Cities?**

- 59 This paper deals with the components of a "smart city" and the governmental actions required for their sustainability. It aims at analysing the perception of the people towards the smart city project and gauges their understanding of its components based on a purposive sampling method. On all fronts of the smart city components, it was found that the general public were not satisfied with the facilities available. — Naina Sambher, D D Sharma

**Economic & Political WEEKLY****EDITORIAL**

Empowerment through Higher Education ..... 7

**COMMENT**

Fact checking of Censorship by Other Means? ..... 9

**FROM THE EDITOR'S DESK**

In Search of a Socially Enlightened Media ..... 9

**FROM 50 YEARS AGO** ..... 9**ALTERNATIVE STANDPOINT**

Suffrage in Shackles: A Case for Enfranchising Prisoners in India

—Anwesha Panigrahi, Akankhya Panigrahi ..... 10

**COMMENTARY**

Covid Nationalism and Its Discontents in China

—Tansen Sen ..... 14

Methodological Issues in SDG India Index: A Critical Assessment

—Md Zakaria Siddiqui, Mohd Feroze Khan ..... 20

Sustainable Development Goals and Small Tea Growers of North-east Assam

—Apurba Saha, Edlina Kerketta ..... 24

Natural Rubber Sector in India: Changes and Challenges

—A Sajitha ..... 28

**REFEREES CONSULTED IN 2022** ..... 34**BOOK REVIEWS**

The Agricultural Dilemma: How Not to Feed the World—The Everyday Wars on World Agri-cultures

—A R Vasavi ..... 35

Reworking Culture Relatedness, Rites, and Resources in the Garo Hills, North East India—Of Spirits and the State: The Universe of the Upland Garo Community

—Richard Kamei ..... 38

**SPECIAL ARTICLES**

Contrasted Agrarian Change in Punjab, India: Case Study of Two Villages in Ludhiana and Jalandhar Districts

—Koichi Fujita, Akihiko Ohno, Kamal Vatta ..... 41

New Labour Codes and Implications for Women Workers

—Kingshuk Sarkar, Ellina Samantroy ..... 52

How Smart Are Indian Smart Cities? A Case Study of Shimla

—Naina Sambher, D D Sharma ..... 59

**CURRENT STATISTICS** ..... 65**LETTERS** ..... 4



FEBRUARY 11, 2023 | VOL. LXIII NO. 6

**The Digital Personal Data Protection Bill, 2022**

- 10 This bill can be best characterised as adopting a soft tone for businesses and granting the tiger claw to the state. — *P Arun*

**COVID-19 and Female Unpaid Labour**

- 14 The COVID-19 pandemic and the associated lockdowns have added to unpaid household labour for women. — *V Kalyan Shankar, Rohini Sahni*

**Failure of Uttar Pradesh's Textile Policy**

- 18 This article critically analyses why the Uttar Pradesh textile policy of 2017 fails to enhance the economic situation of the handloom workers. — *Lipi Ghosh*

**Struggle for a Level Playing Field**

- 21 Ensuring a level playing field for all sportspersons, especially sportswomen, requires a radical overhaul of all sports bodies. — *Jagmati Sangwan*

**Green Finance**

- 24 Green bonds can be a key part of strategies to incorporate climate action into financial decision-making and help developing countries meet their environmental obligations. — *Ismail Siddiqui, Navaneeth M S*

**A Step Ahead in School Nutrition Programmes**

- 27 The introduction of the Chief Minister's Breakfast Scheme in government and aided schools is a timely intervention to ensure nutritious food for children aged between five and nine. — *R Gopinath, R Rengalekshmi*

**India's Exclusive Growth**

- 35 In the period since the early 1990s, India's economy experienced exclusive growth, that is, growth that benefited the rich. The richest 10% of the population has been the recipient of a large and growing share of the incremental income generated by growth. This paper investigates, theoretically and empirically, the rise and persistence of exclusive growth. — *Ajit K Ghose*

**To Patent or Not?**

- 43 India has undertaken many regulatory and legislative reforms to promote innovation and patent protection by universities and academic institutions. This paper provides an empirical estimation of the extent to which patenting by academic institutions in India is affected by factors like institutional policy frameworks, departmental differences, and individual researchers' characteristics. — *Akriti Jain, Ruchi Sharma & P Vigneswara Ilavarasan*

**COVID-19 and Migrant Workers from Rural Bihar**

- 54 More than half of the rural households had at least one migrant worker prior to the pandemic, and for 94% of these households, the migrant workers' livelihood was adversely affected. There was large-scale reverse migration with a huge fraction of returning migrants spending as much as four to five months in native villages with limited opportunities for alternative work. — *Gaurav Datt, Swati Dutta & Sunil Kumar Mishra*

**Postscript**

- 63 *Vikki Gayakavad* on the popularity of Hindi film songs in Greece; *Rajlakshmi Kanjilal* on the South Korean series *Extraordinary Attorney Woo*; *Suheel Rasool Mir* on Kashmir University's *Naseem Bagh*; and Last Lines by *Ponnappa*.

**Economic & Political WEEKLY****EDITORIALS**

- The Budget Ignores the Demand Constraints ..... 7  
Mechanisation without Decent Job Alternatives ..... 8

**FROM THE EDITOR'S DESK**

- An Insight into the Monolith ..... 9

**FROM 50 YEARS AGO****COMMENTARY**

- A Soft Tone with a Tiger Claw:  
A Critical Commentary on the Digital Personal  
Data Protection Bill, 2022  
— *P Arun* ..... 10  
COVID-19 and Female Unpaid Labour  
— *V Kalyan Shankar, Rohini Sahni* ..... 14  
Failure of Uttar Pradesh's Textile Policy  
— *Lipi Ghosh* ..... 18  
Struggle for a Level Playing Field Continues:  
Protests by Wrestlers and Beyond  
— *Jagmati Sangwan* ..... 21  
Green Finance: Perspectives in  
Sustainable Finance Instruments  
— *Ismail Siddiqui, Navaneeth M S* ..... 24  
A Step Ahead in School Nutrition Programmes:  
The Case of Tamil Nadu  
— *R Gopinath, R Rengalekshmi* ..... 27

**BOOK REVIEWS**

- Rethinking Social Justice—Policy and Practice  
of Social Justice in Tamil Nadu*  
— *Raghunath Nageswaran,  
Vignesh Karthik K R* ..... 30  
*Translating Myself and Others—Meditations on  
the Imperfect Art of Translation*  
— *Lucky Issar* ..... 33

**SPECIAL ARTICLES**

- India's Exclusive Growth  
— *Ajit K Ghose* ..... 35  
To Patent or Not? Factors and Motivation  
Affecting Indian Academic Patenting  
— *Akriti Jain, Ruchi Sharma,  
P Vigneswara Ilavarasan* ..... 43  
The COVID-19 Pandemic and Migrant Workers  
from Rural Bihar  
— *Gaurav Datt, Swati Dutta,  
Sunil Kumar Mishra* ..... 54

**CURRENT STATISTICS** ..... 61**POSTSCRIPT**

- Where Madhubala Meets Socrates:  
Hindi Film Songs and 'Being-in-common'  
— *Vikki Gayakavad* (63),  
On Popular Culture and Neurodiversity  
— *Rajlakshmi Kanjilal* (64),  
*Naseem Bagh*: In the Shade of Resistance  
and Respite—*Suheel Rasool Mir* (65)  
Last Lines (66)

**LETTERS**



**A Train to Nowhere**

- 7 Passenger traffic has fallen sharply as the railways prioritise high-end travel over ordinary passengers.

**Social Significance of Modern Gardens**

- 8 The state must cultivate more parks to ensure greater social and environmental cohesion.

**Municipal Elections and the Constitution**

- 10 Some of India's largest cities with a population of a little more or less than one crore have gone without a municipal government for several years.  
— Alok Prasanna Kumar

**Minimum Wages and Informal Jobs**

- 13 The presence of a large informal sector as the mainstay of semi-skilled and unskilled workers raises questions on how the adoption of minimum wage in the formal sector could affect job opportunities. — Saibal Kar, Yashika Khattar

**The Fragile Discourse of Caste in West Bengal**

- 19 The objective of this article is to put forward a modest hypothesis to test, namely "to politicise caste in Bengal, it needs to be taken out from the fold of Hindu religion." — Shiveshwar Kundu

**Railway Landscape and Urban Marginalisation**

- 23 Indian cities, in the last few years, have shown substantial inclination towards rail-based transit-oriented development as a tool to make them more competitive in terms of liveability at a global scale. — Iman Banerjee, Apala Saha

**Strengthening Municipal Finances**

- 28 International experience from both developed and emerging economies suggests a much higher level of intergovernmental transfers to local governments. — Meera Mehta, Dinesh Mehta & Dhruv Bhavsar

**Knowledge and Global Inequality**

- 36 This paper characterises the current structure of the world economy as a combination of knowledge monopolies, which also become monopsonies, largely located in the headquarter economies of the global North, with producer companies mainly based on commoditised knowledge in the supplier economies of the global South. — Dev Nathan

**Is There a 'Money Machine' Tax?**

- 45 This analysis, based on more than four decades of time series data on sales tax/value added tax/goods and services tax in India, does not reveal any nonpareil revenue potential of VAT or the VAT-based GST system. Though the GST revenue has started growing at a faster pace since mid-2020, it is yet to meet its target. — Anita Rath

**Aggregate Demand and Economic Growth in India**

- 55 Applying the autoregressive distributed lag to the co-integration model and incorporating the structural changes in policies since 1991, it is found that in the long run, out of the five components that significantly influence the aggregate demand and hence the economic growth of India, the private final consumption expenditure plays the most significant role followed by private fixed investment. — Umesh Bhagat, Hrushikesh Mallick

**Economic & Political WEEKLY****EDITORIALS**

- A Train to Nowhere ..... 7  
Social Significance of Modern Gardens ..... 8

**FROM THE EDITOR'S DESK**

- Power Plays Out through Distribution and Dispersion ..... 9

**FROM 50 YEARS AGO** ..... 9**LAW & SOCIETY**

- Municipal Elections and the Constitution  
— Alok Prasanna Kumar ..... 10

**COMMENTARY**

- Does Minimum Wage Affect Informal Jobs across States in India?  
— Saibal Kar, Yashika Khattar ..... 13

- The Fragile Discourse of Caste in West Bengal  
— Shiveshwar Kundu ..... 19

- Railway Landscape and Urban Marginalisation: Rethinking Transit-oriented Development  
— Iman Banerjee, Apala Saha ..... 23

- Options for Strengthening Municipal Finances  
— Meera Mehta, Dinesh Mehta, Dhruv Bhavsar ..... 28

**BOOK REVIEWS**

- Mobility as Capability: Women in the Informal Economy—At the Intersections of Patriarchy and Informality  
— Gayatri Nair ..... 32

- Making India Great Again: Learning from Our History—In Search of a Knowledge Society  
— Upamanyu Sengupta ..... 33

**SPECIAL ARTICLES**

- Knowledge and Global Inequality: Monopoly-cum-Monopsony Capitalism  
— Dev Nathan ..... 36

- Is There a 'Money Machine' Tax? Revenue Efficiency of State VAT and GST  
— Anita Rath ..... 45

- Understanding the Structural Dynamics of Aggregate Demand Components and Economic Growth in India  
— Umesh Bhagat, Hrushikesh Mallick ..... 55

**CURRENT STATISTICS** ..... 64**LETTERS** ..... 4



**The Land-Sea Conundrum**

- 10 The new transcontinental linkages are challenging the monopoly of international trade management by Western maritime powers. — *Atul Bhardwaj*

**FYUP and the NEP 2020**

- 14 The four-year undergraduate programme has been adopted by an executive order of the government without any proper deliberation. — *Sudhanshu Bhushan*

**The Dam Safety Act, 2021**

- 17 The asymmetrical arrangements in political and administrative aspects of the Dam Safety Act, 2021 are interrogated in this article. — *Rajesh C S, Ashwati C K & Manu Sharma*

**EWS Reservation and Social Justice**

- 20 With the Supreme Court's pronouncement in its favour, the reservation for economically weaker sections has become infallible. — *Harish S Wankhede*

**Making Election Manifestos Legally Binding**

- 23 Even if the election manifestos are made legally binding, its implementation would remain incumbent upon the Election Commission's competency. — *Gokul Krishnan, Jehosh Paul, Revati Pillai & Saurabh Raj*

**Review of Urban Affairs**

- 29 Six papers examine a wide range of contemporary issues in Indian cities from multidisciplinary perspectives.

**Women Corporators and the Gendered State**

- 31 Little is known regarding how women politicians at the local level influence everyday political work. This paper focuses on narratives from 14 women corporators in the newly formed Vasai-Virar City Municipal Corporation in the context of expanded electoral representation for women in cities. — *Lalitha Kamath, Kanak Rajadhyaksha*

**WhatsApp and Urban Waste Management**

- 38 Using the cases of two participatory policies for waste management in Mumbai—Advanced Locality Management and Swachh Mumbai Prabodhan Abhiyan—this paper explores WhatsApp as a platform for citizen-government interactions in urban policy implementation. — *Jennifer Spencer*

**Street Vending in Master Plans Post 2014**

- 45 The paper posits that the progressive policies of spatial protection for the street vendors directly contradict the state planning practices of addressing informality that rests on restrictive control of the informal and centralisation of planning powers. — *Aravind Unni*

**Women Waste Pickers of Kolkata**

- 51 The women waste pickers of Dhapa, Kolkata seem to withstand the dehumanising disposition of their work by embodying a liminal "hybrid" identity to dissociate from their corporeal and sensorial selves. — *Shreyasee Dasgupta*

**Cultural Ecologies of Urban Lakes**

- 57 How competition between different caste groups shapes urban political ecologies is explored in this paper. Urban communities mobilise narrowly defined caste associations to strategically make claims to place, and lobby for resources and recognition. — *Pullanna Vidyapogu, Indivar Jonnalagadda*

**Socio-spatial Relations in Delhi's E-waste Market**

- 62 This paper offers new insights on the caste segmentation of commerce in urban India and the role of kin networks and "community capital" in consolidating Seelampur's status as a key node within India's e-waste economy. — *Aakansha Jain, Vinay Gidwani*

**Postscript**

- 71 *Tapas Mitra* revisits football history and memory; *Surya Sankar Sen* reflects on his friendship with a cattle smuggler; *Mrinmoy Pramanick* examines the legend of Behula; and *Last Lines* by *Ponnappa*.

**Economic & Political WEEKLY****EDITORIALS**

- Death of a Dream  
Political Developments in Maharashtra

**FROM THE EDITOR'S DESK**

- Should Sympathy Matter in Politics?

**FROM 50 YEARS AGO****STRATEGIC AFFAIRS**

- The Land-Sea Conundrum: Connectivity and Contest — *Atul Bhardwaj* ..... 10

**COMMENTARY**

- Four-year Undergraduate Programme: Boon or Bane of the NEP 2020 — *Sudhanshu Bhushan* ..... 14  
The Dam Safety Act, 2021: Asymmetry in Indian Federalism — *Rajesh C S, Ashwati C K, Manu Sharma* ..... 17  
Does EWS Reservation Redraft the Principles of Social Justice? — *Harish S Wankhede* ..... 20  
Making Election Manifestos Legally Binding: A Wild Goose Chase — *Gokul Krishnan, Jehosh Paul, Revati Pillai, Saurabh Raj* ..... 23

**BOOK REVIEWS**

- The Demolition and the Verdict: Ayodhya and the Project to Reconfigure India* — *Judging Ayodhya* — *Sanjay R Hegde* ..... 26  
*Women and Work in Rural India* — *Women's Contribution in the Rural Production Process* — *Sona Mitra* ..... 27

**REVIEW OF URBAN AFFAIRS**

- Incomplete Visions and Riven Realities in the Indian City — *Ashima Sood* ..... 29  
'We Must Persevere and Persuade, Not Lose Our Tempers and Shout': How Women Corporators Experience and Shape the Gendered State under Conditions of Urban Transformation — *Lalitha Kamath, Kanak Rajadhyaksha* ..... 31  
Participation through WhatsApp in Urban Waste Management: Citizen-Government Relations and Outcomes in Mumbai's Participatory Waste Management Policies — *Jennifer Spencer* ..... 38  
Planning the Informal: Locating Street Vending in Master Plans Post 2014 — *Aravind Unni* ..... 45  
Invisible Custodians: A Critical Inquiry into the Continuing Obscurity of Women Waste Pickers at Dhapa Landfill of Kolkata — *Shreyasee Dasgupta* ..... 51  
Cultural Ecologies of Urban Lakes: The Bathukamma Festival, Caste Associations and Resource Claims in Hyderabad — *Pullanna Vidyapogu, Indivar Jonnalagadda* ..... 57  
Community Capital: Socio-spatial Relations in Delhi's Seelampur E-waste Market — *Aakansha Jain, Vinay Gidwani* ..... 62

**CURRENT STATISTICS** ..... 67**POSTSCRIPT**

- Memories of Football: A Reverie — *Tapas Mitra* (71),  
The Myth of Rashidun — *Surya Sankar Sen* (72),  
Behula Never Can Be a Widow — *Mrinmoy Pramanick* (73), *Last Lines* (p 74)

**LETTERS** ..... 4



**Educere- BCM Journal of Social Work**  
**Volume 18, Issue 1, June 2022**

---

**CONTENTS**

**Editorial**

National Education Policy and Social Work Education in India  
*Ipe Varughese*

**Articles**

Review of justice for sustainability in the Covid-19 era  
*María del Rosario Molina González, José Marcos Bustos Aguayo,  
Margarita Juárez Nájera and Cruz García Lirios* 5

The fundamental unit of society amidst the Covid- 19 pandemic:  
An analysis of the situation and measures for family level resilience building  
*Deepak Joseph, Sophiya Shahul, Riya Roshan Abraham and Christo Joy* 18

Challenges faced by children in conflict with law and  
scope for social work interventions 37  
*Rachel and Gunavathy*

Research interest and research self-efficacy of MSW students in Kerala 44  
*Jesly Jacob and Jose Antony*

Mental strain on women in urban India during COVID-19 Imposed  
lockdown: An analysis 66  
*Shweta Verma, Sapna Dogra and Anup Kumar Srivastava*

A study on the role of parents in the empowerment of their children  
against Child Sexual Abuse 78  
*Nancy Susan Philip*





# Indian Journal of Positive Psychology

Volume 13

Issue-4

December, 2022

## Contents

Efficacy of the Self-regulation and Quality of Life Intervention Program (SQOLIP) on the Pathological Internet Use and Quality of Life of Selected Indian Adolescents <i>Arackal Annamma Thomas and Lucila Ortiz Bance</i>	327-332
Impact of Marital Stress and Communication Quality on Marital Satisfaction: Basis for Proposed Couple Relationships Enhancement Program <i>Sebastian Ouseph and Lucila Ortiz Bance</i>	333-339
Development and Standardisation of Anugraha-Loyola Gratitude Scale (ALGS-48) <i>M. Louie Doss and Lawrence SoosaiNathan</i>	340-351
Relationship between Psychological Capital and Job Engagement: A Study on Public Healthcare Providers <i>Azaz Khan and Dinesh Nagar</i>	352-355
Comparative Analysis of Job Satisfaction between Government/s Private Primary School Teachers of Haryana, India <i>Rachna Rani</i>	356-360
Understanding the Role of Spiritual Groups on Spirituality, Hope, Resilience and Social Connectedness amongst Indian Women during the COVID-19 Pandemic <i>Arushi Srivastava</i>	361-367
Joy Care: Development and Standardization of a Scale of Psychological Well-being <i>Alagh, N., Chadha, N.K., and Malhotra, L.</i>	368-371
Study of Emotional Intelligence in Relation to Self-efficacy among Adolescents <i>Naila Firdous and Shah Alam</i>	372-376
Influence of Age and Gender on Mindfulness Attention Awareness and Perceived Stress <i>Mohd Mustafa and Sneha Gulati</i>	377-381
Psychological Hardiness and its Relationship with Comorbid Mental Health Problems among Rural Adolescents <i>Priyanka, Tejpreet Kaur Kang and Seema Sharma</i>	382-385
The Role of Mindfulness in Cognitive Emotion Regulation and Thought Suppression <i>Torsa Chatteraj and Arushi Srivastava</i>	386-393
The Arts in Psychotherapy: Psychological Well-being, Trait Emotional Intelligence, and Self-esteem among Dancers <i>Vaishnavi Joshi</i>	394-400
Psychological Well-being, Resilience and Guilt among Prisoners and Non-prisoners: A Comparative Study <i>Devashree Desai and Kaustubh V. Yadav</i>	401-405
Caregiver Burden and Coping Strategies among Parents of Special Children <i>Danu Jaffrin A., M. Vinothkumar, and Anjo George</i>	406-411
Occupational Stress in Relation to Work-life Balance and Mindfulness: A Study of Banking Sector <i>Ravi Singh Hooda and Sandeep Singh</i>	412-417
Gratitude and Hope as Correlates of Psychological Well-being amongst COVID-19 Survivors <i>Taruna Gera, Ajit Bhardwaj, Devansh Singh, Jyoti Boora, Namita Lohra, Sangeeta Boora, Shubhangi Singh, and Tanisha Sharma</i>	418-422



## Contents

---

Role of Neuroticism on Quality of Life among Type-2 Diabetic Patients <i>Iram Naim and Asma Parveen</i>	423-427
Autism Spectrum Disorder and Interventions <i>Sandhya Rai and Sadiya Rahman</i>	428-431
Psychological Capital (PsyCap) and Mental Health among College Students <i>Punam Devi Bagi and Sunita Chand</i>	432-435
Character Strengths and Online Student Engagement: The Role of Academic Support and Authentic Learning <i>Aanchal Chopra and Dinesh Chhabra</i>	436-442
Spirituality as Predictor of Psychological Well-being amongst Adolescents <i>Taruna, Sarita, and Gaurav Sharma</i>	443-447
Psychological Manifestations of Infertility <i>Poonam Devi and Sanjay Kumar</i>	448-451
Book Review <i>Guilherme Welter Wendi</i>	452-453



## Contents

### Research Articles

- Understanding Poverty and Survival Strategy among  
Ethiopian Pastoralists: The Boorana Pastoralists Perspectives  
*Galgalo Dika, Degefa Tolossa and Shiferaw Muleta Eyana* 171
- Understanding What Informs the Choice of Agro-Processing  
Firm Siting: Evidence from a Developing Country  
*Isaac Nyame and Livingstone Divine Caesar* 189
- Financial Leverage and Financial Performance of Savings and  
Credit Co-operative Societies in Tanzania  
*Nathaniel Naiman Towo* 214
- Upgrading Opportunities and Challenges for Small  
Coffee Producers in Sidama Region of Ethiopia  
*Gashaw Addisie and Lika Tebarek* 234
- Traditional Knowledge and Practices in Natural Resource Conservation:  
A Study of the Zukpiri Community Resource Management Area, Ghana  
*Louis Baaweh, Issah Baddianaah and Bernard Nuoleyeng Baatuuwie* 253
- The Hiring of Labour for Field Cultivation:  
A Study in the Brahmaputra Valley of Northeast India  
*Anup Kumar Das* 274
- The Occupation of Last Resort? Determinants  
of Farming Choices of Small Farmers in Nigeria  
*Toritseju Begho and Mary Omokhose Begho* 298
- Research Note** 319
- La Rioja in a Cheese  
*Francesc Fusté-Forné*





# ISDA JOURNAL

STUDIES IN DEVELOPMENT AND PUBLIC POLICY

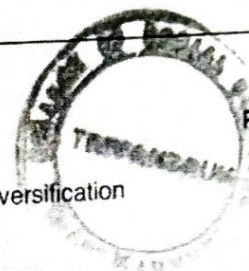
Vol. 33 Number 1

January - March 2023

## Contents

<b>An Analysis of Components of Municipal Finances: The Case of Municipal Corporations in Kerala</b> <i>Ramaswamy N &amp; Christabell P.J.</i>	<b>1</b>
<b>Socio-Religious Reform Among Malankara Syrian Christians: The Role of Abraham Malpan</b> <i>Fr. John Mathew</i>	<b>37</b>
<b>Understanding Structural Inequalities: An Attempt to inform Policy Dialogues in India</b> <i>Arjun S. Mohan</i>	<b>55</b>
<b>TV Serials and Reinstating Stereo Types: Cultural Image and Perception Among Women Audiences</b> <i>Lekshmi S. Kaimal &amp; Johnson M.M.</i>	<b>69</b>
<i>Book Review</i>	
<b>India's Strategic Vision and Foreign Policy: Options and Challenges</b> <i>Prayaga M.A.</i>	<b>87</b>





S. No.	Title	Page No.
1.	Mitigating Risk and Augmenting Farmer's Income through Livelihood Diversification Framework <i>K. J. Srinivas and B. Sai Giridhar</i>	155
2.	Transformation from Model Village to Model Tourist Village: The Missing Link <i>Ankit Agrawal, Suvijna Awasthi and Swati Vishnoi</i>	171
3.	Access and Determinants of Formal Agriculture Credit in Uttar Pradesh, India <i>Surendra Singh Jatav and Sanatan Nayak</i>	185
4.	Internal Migration during COVID-19 Pandemic: An Analysis through the Lens of Social Organisations <i>Arvind S. Susarla and S. Shaji</i>	198
5.	The Political-Economy of Rural Development through Corporate Social Responsibility: An Assessment of the Ins and Outs <i>Bishnuprasad Mohapatra</i>	210
6.	Impact of an Industry in the Development of a Rural Area: A Case Study of FACOR in Odisha <i>Lopamudra Behera</i>	230
7.	Prevalence and Determinants of Intergenerational Métiers Mobility of the Labourers of Assam Tea Gardens <i>Shrabanti Maity and Dipshikha Buragohain</i>	243
8.	A Study on the Livelihood Assets and Income of the Plantation-based Rehabilitated Jhumias of Tripura <i>Vanlalrema Kuki and Indraneel Bhowmik</i>	259
9.	Book Review: Challenges to Local Governance in the Pandemic Era: Perspectives from South Asia and Beyond <i>Sreeja K.</i>	276



## Contents

### Editorial

127

### Articles

Dating App Communication: Personal Characteristics,  
Motives and Behavioural Intent

*J.J. De La Cruz, Narissra Maria Punyanunt-Carter and Jason S. Wrench*

131

The Effects of Different Data Visualisation Formats on  
News Recall and Comprehension

*Raghda Mahmoud and Shaima'a Z. Zoghaib*

155

Evaluating the Effectiveness of the Official and the Non-Official  
Social Media Brand Communication Methods on Egyptian  
Women's Consumer-Based Brand Equity

*Sara Emam*

177

An Exploration of Social Media Users' Desires to Become  
Social Media Influencers

*Sheldon Fetter, Paige Coyne, Samantha Monk and Sarah J. Woodruff*

200

Influencers and Their Salience: Public Perceptions of  
Individual Agendas on Instagram

*Philemon Bantimaroudis*

217

Influence of Perceived Media Support on Negative  
Experiences of LGBTQ+ Individuals

*Reza Shabahang, Mick B. Brewer, Mara S. Aruguete, Hyejin Shim,  
Zahra Ghaemi and Benyamin Mokhtari Chirani*

238



**Rally**  
**February 2023**  
**Vol. 26 No. 2**

**Rs. 10/-**

**Editor**  
 Fr. J Benjamin S.J.

**Editorial Board**  
 Fr. N. Sarathi, S.J.  
 Ms. Julia Pradeepa  
 Prof. Gladston Xavier  
 Prof. Manoj  
 Prof. Anton  
 Dr. Bosco

**Associates**  
 Edison  
 Jaya  
 Deena

**Layout**  
 Nazares

**Cover Design**  
 Mr. Jeevanandam

**Subscription**  
 Regular  
 Rally Rs. 100.00  
 Students Rs. 100.00  
 Foreign US\$ 25.00  
 Life Contribution Rs. 1,500.00

**Topics for the Next Two Issues**

**March 2023 :**

**Women in**

**Science and Technology**

**April-May 2023 :**

**Equity and Freedom of  
 Expression**

## Contents

Rallying Point	03
AICUF In Solidarity	05
Towards the Dawn of Social Harmony	06
Peace at All Costs	09
The Role of Youth in Inter-Faith and Harmony	10
Inter-Faith and Harmony: The Role of Youth	12
Inter-Faith and Harmony	13
Social Harmony	16
Observing World Interfaith Harmony Week and International Day	19
News from Tamil Nadu AICUF	20
National Youth Day Celebration - Dumka AICUF	20
AICUF Karnataka Report	21
Reflection	22

**Rally**

52, Sterling Road, Chennai - 600 034  
 (91-44-28272283)  
 E-Mail: <aicufnews@gmail.com>

15



# 762

## MENTAL HEALTH LANDSCAPE

a symposium on

psychosocial disability

symposium participants

- 10 **THE PROBLEM**  
Posed by **Roma Bhagat**, Advocate, Delhi,  
and **Seema Baquer**, Independent Consultant,  
disability issues, Delhi
- 14 **MY INVISIBLE EXISTENCE**  
**Shampa Sengupta**, Founder, Sruti Disability Rights  
Centre and Joint Secretary, National Platform for the  
Rights of the Disabled, Kolkata
- 16 **FROM PATIENT TO PRACTITIONER**  
**Ganesh Anantharaman**, Practitioner of  
Lacanian Psychoanalysis, Chennai
- 19 **LET'S TALK ABOUT RECOVERY**  
**Prateeksha Sharma**, Bright Side Family Counseling  
Centre, Delhi-Faridabad
- 23 **CARER PERSPECTIVE**  
**Deepika Nair** and **Vijay Rajkumar**,  
Development professionals
- 27 **ROLE OF INSTITUTIONAL CARE IN  
PSYCHIATRY**  
**Krishna Prasad Muliya**, Additional Professor,  
Department of Psychiatry, NIMHANS, Bengaluru,  
and **Pratima Murthy**, Director and Senior Professor  
of Psychiatry, NIMHANS, Bengaluru
- 32 **FINANCING OF MENTAL HEALTH IN INDIA**  
**Rachana Parikh**, Senior Programme Officer,  
PATH, Delhi; and **Indranil**, Health Economist and  
Professor, O.P. Jindal Global University, Sonapat
- 36 **A CONTINUING DEPRIVATION OF THE LAW**  
**Amita Dhanda**, Head, Centre for Disability  
Studies and Centre for Legal Philosophy  
and Justice Education, NALSAR University  
of Law, Hyderabad
- 40 **THE DESTITUTE MENTALLY ILL**  
**M. Manohar**, Founder and President, INSED, Sangareddy
- 42 **LAW ENFORCEMENT AND MENTAL HEALTH**  
**Kanwaljit Deol**, IPS, Retd. Director General of Police;  
and National Human Rights Commission, Delhi
- 45 **OUT OF SIGHT, OUT OF MIND!**  
**Madhurima Dhanuka**, Programme Head,  
Prison Reforms Programme, Commonwealth  
Human Rights Initiative India, Kolkata
- 49 **THE INVISIBLE WOUND**  
**Arvinder Singh**, Founder and Director,  
Ashoka Centre for Well-Being,  
Ashoka University, Sonapat
- 52 **MENTAL HEALTH IN CONFLICT**  
**Mahnoor Yar Khan**, Drama Therapist, Hyderabad
- 55 **COMMUNITY BASED REHABILITATION**  
**Abdul Mahood**, Founder and Director,  
Snehi, Delhi
- 58 **THE NEXT GENERATION**  
**Pallavi Baraya**, Health and Education Consultant,  
Delhi
- 63 **BOOKS**  
Reviewed by **Chandrashekhar Dasgupta**,  
**Shivshankar Menon** and **Kathryn Hardy**
- COVER**  
Designed by [www.designosis.in](http://www.designosis.in)



# SJCC Management Research Review

Vol. 12| No. 2| December 2022

ISSN - 2249-4359

## Table of Content

1. An Empirical Study on the Mediating Role of Organizational Culture Susan Chirayath.....	01
2. Classification of Various Factors that have Caused Major Fluctuations in Cryptocurrency Market Anand Shankar Raja M, Benita Priyadarshini D, Jananii Govindaraj & Saket Agarwal.....	22
3. Problems Faced by Women Handloom Weavers in Pollachi Taluk S. Poongodi & P. Jayanthi.....	44
4. Role of Human Resource Management (HRM) in Marketing Shankar Kumar Jha.....	53
5. Exploring Mental Accounting through Financial Accounting: An Elementary Approach Jeswin Jose.....	73
6. Brain and Brand Loyalty: An Investigation of Loyalty Factors Tarique Anwer.....	93
7. Revisiting Artificial Intelligence in HRM Savita Rastogi & Priya Sharma.....	110
8. Does Electric Vehicles Can Reinststate the Conventional One? A Study on Consumer Perception Over Electric Vehicle (Four Wheeler) in India Priyanka Ghosh.....	129



# **VAIHARAI**

(The Dawn)  
**A Theological Half-Yearly**

Vol. 27, No.2

Vol. 28, No.1

Jul. - Dec. 2022

Jan. - Jun. 2023

## **Contents**

From Editor's Desk	i
1. Understanding Indian Democracy and the Constitution <i>Rev. Dr Paul Mike,</i>	01
2. Secular Fabric of India <i>Rev. Dr V. Gnanamuthu</i>	14
3. Secular Spirituality in India Today: A Commitment to Liberative Net-Working <i>Rev. Dr E. John Kulandai</i>	34
4. Parish Community as A Synodal Church: Reflections in the Context of Tamil Nadu <i>Rev. Dr Sebastian S. Karambai</i>	53
5. A Book-Review <i>Rev. Dr Varan Vardhan</i>	72

The main scope of VAIHARAI published by THEDAL VELIYEEDUGAL is to foster reflection on theological issues in India and elsewhere in the light of the Christian faith and other religions. The opinions expressed in the Journal are those of the author and not necessarily those of the editorial board or of the publisher.



# TABLE OF CONTENTS

DOWN TO EARTH	1-3
ECONOMIC AND POLITICAL WEEKLY	4-7
EDUCERE – BCM JOURNAL OF SOCIAL WORK	8
INDIAN JOURNAL OF POSITIVE PSYCHOLOGY	9-10
INTERNATIONAL JOURNAL OF RURAL MANAGEMENT	11
ISDA JOURNAL	12
JOURNAL OF RURAL DEVELOPMENT	13
MEDIA WATCH	14
RALLY	15
SEMINAR	16
SJCC MANAGEMENT RESEARCH REVIEW	17
VAIHARAI	18